

Evaluating the Impact of the Approach of Cooperation and Partnership Between Schools and the Community in Developing Educational Administration

Thaer Rashid Mohammed

Imam Al Kadhum College, Iraq

DOI: 10.37648/ijps.v18i01.003

¹Received: 29 May 2024; Accepted: 30 June 2024; Published: 10 Jul 2024

ABSTRACT

The study aimed to evaluate the impact of the cooperation and partnership approach between schools and society in developing educational administration. The researcher adopted the descriptive analytical approach. The questionnaire was distributed to (385) teachers and principals in schools in the Iraqi state. The study reached the following results: There is a significant impact of the cooperation and partnership approach between schools and society in developing educational administration in Iraqi schools, and there are no differences between the average significant answers of the sample members about the impact of the cooperation and partnership approach between schools and society in developing educational administration in schools. Iraqi nationality according to the variable number of years of experience. And paying attention to participatory aspects and cooperative activities between the school and society, and activating the role of the family in the educational process, synonymous with the educational process, as it is considered the first building block in society.

Keywords: *cooperation and partnership approach; educational administration; schools; society.*

INTRODUCTION

The relationship between schools and communities is an interactive relationship that is closely interconnected, as it undoubtedly serves both parties equally, as the school is considered one of the most important agencies within communities, concerned with the education and upbringing of the community's children, and is an auxiliary to the family in the field of education, and then Working to educate its children in preparation for the stage of educating society and then building it, all of this is done in accordance with the requirements of society, meaning that the school is not isolated from the needs and requirements of society, but rather is an essential part of it, and works to fill the gaps that exist within it, by preparing a generation capable of leading it, Therefore, the school in this way is not at all separated from its community and what happens within it, and it should be noted that the school may be exposed to many problems and ,the solutions for those latter are outside the school, so it is mainly linked with many educational, teaching and community councils. It is also necessary to highlight that the school interacts with the components of society, especially parents, and the possibility of their participation in many activities that it is interested in .and gives it great time and effort in order to enrich its journey and have a positive impact on its students Also, their role with teachers and administrative boards in schools cannot be overlooked to evaluate Any activity, or its modification, so there must always be a communication link between the school and the components of society to strengthen the relationship and follow a curriculum that serves learning processes

¹ *How to cite the article:* Mohammed T.R. (July 2024); Evaluating the Impact of the Approach of Cooperation and Partnership Between Schools and the Community in Developing Educational Administration; *International Journal of Professional Studies*; Jan-Jun 2024, Vol 18, 27-38; DOI: <http://doi.org/10.37648/ijps.v18i01.003>

Educational institutions represent the main focus of the social and educational .and society at the same time structure of any society , in addition to being a part From society, it includes diverse approaches and experiences to deliver Learners achieve specific educational goals . Society depends on The school aims to provide him with new knowledge and experiences and communicate In the souls of its individuals are the . values, principles, and ideals that it targets (Makhlouf and Al-Shoufani, 2024, p. 19)

In order to achieve that solidarity and partnership between schools and society, the role of educational ,because it is considered one of the sub-systems of public administration administration must be activated which is affiliated with the state and society, each according to its social, political and other circumstances (Sadiq, 2017, p. 29). Therefore, partnership between schools, family and society is considered one of the most important strategies that contribute to raising the school's status The educational process and the preservation of civic values and positive habits of society. This will help determine Program structure to create partnerships Effective communication between schools, families and society, and the pursuit of responsibilities Shared by all parties in the partnership (schools, families, community). Education goals are achieved And learning and student behavior through integration and communication in projects and activities to improve the quality of performance .The school and its results (Al-Otaibi and Al-Tuwajri, 2020, p. 123)

THE PROBLEM OF THE STUDY

connection to society in our contemporary time has become It is an urgent necessity , and an individual and social necessity , because the school is considered the organization that continues to guide students towards socially acceptable values after the family, so its educational mission is complementary to the mission of education. Therefore, the disparity between the school's products and the outcomes that What society desires ,must be integrated, and to achieve this, schools must be directed to strive towards cooperation, partnership and interest in social sharing between schools and their communities , and this is done through higher leadership, which may be represented by the educational administration, which supervises the nature of the educational process in schools. , and directing it, and from there , this cooperation can in turn be reflected :in light of the above, the researcher poses the problem ,primarily in educational administration. Therefore

- What is the impact of evaluating the approach to cooperation and partnership between schools and ?society in developing educational administration

OBJECTIVES OF THE STUDY

- Evaluating the impact of the cooperation and partnership approach between schools and society in .developing educational administration
- Effect Determine the statistical differences between the average answers of sample members about Evaluating the approach to cooperation and partnership between schools and society in developing .according to the variable number of years of experience educational administration in Iraqi schools

THE IMPORTANCE OF THE STUDY

- The importance of these variables is due to the effective role of partnership and cooperation between .schools and society
- Linking the outcomes of the preparation, upbringing and education processes and their impact on .society
- He addressed the field of educational administration because it is a center Chief in directing .education processes in schools

STUDY HYPOTHESES

- Evaluating the impact of the cooperation and partnership approach between schools and society in .developing educational administration

An approach to cooperation and partnership between schools and society in There is a moral impact . developing educational administration in Iraqi schools

There are no significant differences between the average answers of sample members about The impact of the approach of cooperation and partnership between schools and society in developing educational .according to the variable number of years of experience administration in Iraqi schools

STUDY VARIABLES

- . Cooperation and partnership between schools and society :Independent
- .Affiliate : Educational Administration

METHOD AND PROCEDURES

This section of the research contains the procedures that will complete the theoretical and practical aspects of the research, where the methodology used is determined, and then the tools that will be relied upon to :complete the practical study, according to the following

STUDY METHODOLOGY

1. The research adopted a descriptive and analytical approach, because it is consistent with the variables presented in the research, as the research uses descriptive review to describe the theoretical section, and analyze the concepts contained within it, by returning to the research and evaluating the approach to cooperation and research that dealt with the same topic, which is . partnership between schools and society in developing educational administration
2. Another thing that the research used was the statistical study during the distribution of questionnaires to a random sample of community members affiliated with the research. These questionnaires consisted of a number of paragraphs that fit the dimensions that presented the goals .and variables

STUDY LIMITATION AND DETERMINANTS

- Objectivity: A study evaluating the approach to cooperation and partnership between schools and society . in developing educational administration
- .Time: Academic year 2024 AD
- .Teachers and principals in schools in the Iraqi state :Humanity
- . Iraqi state schools :Location

STUDY POPULATION AND SAMPLE

It includes all teachers and principals in schools in the Iraqi state, and the researcher will distribute the questionnaire to a simple random sample of teachers and principals in schools in the Iraqi state, which will .number (385) individuals

STUDY TERMS

- It expresses the extent of compatibility and completeness :Cooperation and partnership approach ,between schools and the community to which they belong, in terms of establishing projects, activities and events and working to evaluate them with the aim of raising the efficiency of each of them and .(Al-Rubaie, 2023, p. 140) reaching the desired goals
- It is the responsible leadership from the technical and administrative aspects :educational administration how to guide, evaluate and implement plans in schools affiliated with education directorates and of institutions, as the administration works to monitor the implementation processes and direct the .(Talafha, 2017, p. 182) responsible teachers and administrators.

THEORETICAL FRAMEWORK AND PREVIOUS STUDIES

The concept and essence between schools and society An approach to cooperation and partnership The school is considered an extension of the family and society. The school, home, and society are an open They represent circles that understand the life of the child, as he is the focus of their efforts, and the system from the function of the family and society, and the partnership between function of the school does not differ Efforts between these three .the school, family and society is a matter of cooperation and coordination ,parties, with the aim of achieving better education and upbringing for students . In this type of partnership Both the school and the community participate and collaborate with their experiences, knowledge and resources to achieve common goals . (Al-Rubaie, 2023, p. 139) explained that this cooperation and partnership between them is considered very important for student education because it can enhance trust And society, and improves interaction and communication between them, and .between schools and families also helps in achieving goals in a more effective way , and contributes to enabling education , cooperation and partnership: Civil society has responsibilities, the first of which is to help, including schools, to become more qualitative in their educational results and to inform society of problems and obstacles in school It is influenced by education, evaluating the extent of achievements and success achieved by. .education Different methods for schools to educate educational facilities and providing support in various forms students according to the needs and priorities of society so that they become a force. Add to this the maximization of the effectiveness of all resources used in the education process and expenditure on .On education through accountability (Al-Hajriyah, 2010, p. 7) education, better control is achieved

- The benefits achieved

The connection between all schools and the surrounding community is considered a basic need, so the principals responsible for them must strive to achieve benefit, each from their location and according to the position they occupy. Therefore, the success or failure that is evident from a school directly indicates its connection with its societal surroundings. Therefore Strengthening the relationship between them is extremely important, in addition to the importance of involving the family in that relationship, so that this relationship achieves the links in the correct manner, so each person in his position seeks to fill the gaps, and then the interconnection between all components of society , and their cooperation with each other, and the importance of this can be explained. The relationship and the benefits of that connection through a group of (Makhlouf and Al-Shoufani, 2024, p. 20) :points, including

- It improves society and improves its living conditions It is only possible for the school to carry out its social roles through cooperation with various units in society, and cooperation will not be achieved Except by deepening the bridges of communication between them.
- It works to strengthen the affection between the school and... Parents of students It removes the psychological and social barriers between them and feels The student feels safe inside and outside school.
- It leads to the exchange of ideas and experiences between teachers and parents Related to education For children and coordination between the school The home is in a complete way to ensure the . good development of each student's privacy

:(Al-Rubai, 2023, 2 142) pointed to a group of benefits, which are

- Strengthening the cooperative and integrated relationship between the school and the community.
- Improving efficiency in educational performance.
- Strengthening the concept of citizenship in society.
- Developing authority and social responsibility.
- . Developing values and life skills among learners
- Participation . in addressing the confrontations and complexities facing the school
- . Contributing to improving the student teaching and learning process

- Required ingredients

The partnership between the school, the family and the community is based on many parties, such as : school as well as some governmental institutions such as : the Ministry of , The student's guardian ,administration

Interior, the Ministry of Health, mosques, and the Department of Control drugs, universities, rehabilitation centers, some private sectors, and other ministries and units. Participation represents all bodies and organizations in all administrative standards, and the school's partnership with Family and society are important matters that greatly influence improving the efficiency of education and the success of students (Al-Rehaily and Al-Sisi, 2019, p. 225). This partnership consists of several basic components, including

1. Communication: There must be permanent and effective communication between the school, family society, and previous sectors through holding meetings, workshops, and exchanging e-mails and telephone communications, in order to ensure From insurance Suitable and safe learning community For students
2. Participation: The family and community must feel that they are a part that cannot be separated About the learning process, therefore it must Encouraging them to participate in school activities and events and help achieve school goals
3. Respect: The school, family and community must have mutual respect, through valuing The opinions of others and respect for everyone's rights, which helps build a common atmosphere to work in a team spirit
4. The school must be transparent in matters related to all educational processes, the family :Transparency and society They must be committed to cooperating and providing the necessary information for the school, which contributes to enhancing educational efficiency and striving to achieve the desired goals
5. Caring for students: The family and community must show interest in students and follow their academic progress And participate in solving their problems, and the school must provide the required and necessary resources.

- **educational administration**

- Its concept

It is the cornerstone upon which the process can be achieved and developed Educational education and its development, so officials in the Ministry of Education and Learning must pay attention to this Administrations and their development to work from traditional authoritarian administration to educational leadership Democratic, the school principal must possess special skills that qualify him to hold this position Among them is to be educational, and what is meant by educational is not only the degree from the College of Education, but rather it is social, human, and leadership behavior, and the leader also has special characteristics, and in order for us to be able to develop and develop educational educational institutions we must work to develop school administrations, considering that development is the most important characteristic of the era, whereas Successive, rapid, continuous and advanced developments include all areas of life and educational, Economic, political, social, especially educational and pedagogical The basis of success for any successful educational institution is to administration is basically expressed as strive and work to find the required environment, according to clear visions that must be achieved by evaluating the appropriate atmosphere for that, with the aim of reaching impressive results and high educational and pedagogical outcomes. Therefore, it must be Focusing on all effective elements in educational administration, including educational administrative leaders, teachers, and students The relationship between them is intertwined and it is not possible to separate one of them from the other. Each of them They complement each other, and they all achieve and prepare for success for the organization (Misbah Ali, 2023, p. 20)

- most important

Educational administration has great influence on the educational process and is one of the elements that control the success or failure of education. We can mention some of the important points as follows

1. Being one of the basic pillars of success, the progress of education systems as a whole depends on the administrative quality and ability it shows in ensuring the desired tasks are accomplished
2. Increasing social demand for education
3. The huge expansion and rapid spread of technologies and communications and the increase in knowledge and information
4. Its role in translating educational goals and translating educational philosophy into scientific reality
5. Being related to education, education is an essential management tool for national goals (Sadiq (p. 40, 2017)

- Calm down here

Organize leaders in education Lectures to educate community members and open doors for them The school players and halls to carry out their beneficial Its library, as well as enabling its members to benefit from activities. In contrast , F.E.N The community provides legal and material assistance that enables The school and aims to achieve better development for the student in many , performs its role in an acceptable manner respects Also, one of the .Physical , mental, social and emotional (Makhlouf and Al-Shoufani, 2024, p. 20) important goals is to push workers towards cooperation with their colleagues and concerned individuals to achieve optimal results, and in this matter, management is considered a means of reaching the organizational .(Davistani, 2020, p. 68) goals of the educational institution

- The importance of cooperation and partnership between schools and society in developing educational administration

... connection to society in our contemporary time has become It is an urgent necessity, as the change that is taking place in curricula and programs Schooling and its intensity that resulted from the continuous cognitive momentum He made the school an institution unable to carry out its function Alone, but shared by many institutions, such as the media and sports Children and family, the latter of which have come to play a role Educational and important. Thus, the school finds itself close Connection to family and surroundings, which means they do not enjoy In independence, in this sense, it varies greatly Depending on the geographical and cultural origins of the audience of learners who She embraces them. Therefore, the social environment is characterized by poverty Economic and cultural school can only lead to failure And ignorance, but rather creates cultural disabilities, while the surrounding Economically and culturally well-off , the school remains of a certain utility In that it allows communication between elites and many Media channels, and conscious school administration works to study society The local community so that it can play its role in solving its problems to improve Living conditions in it, so it organizes lectures To raise awareness among community members, and open the doors of the library to them School, as well as enabling its members to benefit from its playgrounds And its halls to carry out their useful activities. On the other hand, in society Provides moral and material support that makes the school capable of Presenting her role in an acceptable manner. (Makhlouf .(and Al-Shawafni, 2024, p. 19

Therefore, the greatest modernization of educational administration is the introduction of educational innovations in light of the difficult circumstances related to the economy, culture, and social life, and working to develop, renew, and confirm guidance goals and societal goals, as the development of the concept of educational administration has directly affected the role and tasks of the school principal, so it is no longer limited to To implement the decisions and instructions given to him, he has gone beyond his role to achieve the corresponding capabilities that help the student to make full and integrated progress in all aspects of his .personality, including interaction with the society surrounding him (Talafta, 2017, p. 180)

Second: Previous research

- The study aimed to know the degree to which the school Study (Makhlouf and Al-Shoufani, 2024) administration uses methods of cooperation between the school and the local community in the Libyan municipality of Al-Abyar in relation to... for teachers in the basic education stage, and to identify obstacles to that communication. The descriptive approach was adopted , and a questionnaire consisting ,of (31) statements was applied to a number of basic education teachers, the size of which was (150) and its results showed: The degree of reliance on cooperation between schools and communities The ,level of local education in the basic education stage according to the fields (student affairs, school affairs health and environmental affairs, and fields in general) was to a moderate degree, and among the most important obstacles to communication and cooperation between them were (the pressure of school work on teachers and principals, lack of awareness of the importance of the interactive relationship). It also showed that there was no There are statistical differences in the degree to which the school administration uses methods of cooperation between the school and the local community depending on the variables (type and period of service) in general.
- The study intended to find out the most important obstacles that could reduce Study (Abu Jamal, 2024) ,the nature of the relationship between the local community and kindergartens as seen by the principals and it was based on the descriptive approach within a community of kindergarten principals and their representatives, according to a sample of (41) of kindergarten directors in the city of Jerusalem, and

their results showed the presence of technical, administrative, and social obstacles related to the supportive environment to a moderate degree. Also, the participation of the local community also came to a moderate to weak degree in some paragraphs, and it also reached. These obstacles affect the nature of the relationship between kindergartens and the local community, such as financial support and social support through communication with the school, as well as volunteer and cooperative work in partnership with kindergartens, a weak level of interest in kindergartens, and the study recommends working on the idea of a community kindergarten and strengthening the relationship. Partnership between kindergartens and the local community in Jerusalem, and devoting efforts to activate the participatory relationship by involving the local community in everything related to kindergartens in Jerusalem and directing them towards work to enhance the progress of kindergartens in all aspects

- The research aimed to identify the reality of the school's partnership with the Study (Al-Rubai, 2023) family and society and to identify the most prominent proposals for developing the organizational guide for the school's partnership with the family and society. The approach of description and analysis was adopted, and the researcher concluded that the items contained in the organizational guide express the reality of the partnership. It is in line with education policy and the nature of Saudi society, and contributes to improving partnership. The most prominent recommendations were: the necessity of creating platforms for communication, recruiting volunteers, organizing social events, and launching awareness campaigns; The necessity of increasing the level of cooperation between the family and the school in terms of exchanging views on many educational and administrative issues facing the school's work. Creating communication platforms: Digital communication platforms or in-person workshops can be created for interaction between the school, family, and community. This includes the use of email websites, social media, and in-person meetings.
-) A study Kilag, et al., 2024 aimed to determine the relationship between educational leadership and (school effectiveness in educational institutions in the city of Toledo, Philippines. A mixed-methods approach was used, including a survey questionnaire and focus group discussions. The survey was conducted on 13 school principals, while focus group discussions included 14 teachers and school administrators. Quantitative results showed that educational leadership had a positive, significant effect on school effectiveness, while school level had no significant effect. Qualitative findings highlighted the challenges principals face in implementing effective instructional leadership practices, including resistance to change and limited resources. The importance of cooperation and communication between school principals, teachers and the community in enhancing the effective activities of the administration was also emphasized. Comparative analysis of the quantitative and qualitative results revealed that while the results reflected a significant positive relationship between instructional leadership and school effectiveness, the focus group discussions provided valuable insights into the challenges and strategies for effective implementation of instructional leadership practices. Overall, this study indicates that instructional leadership plays a critical role in enhancing school effectiveness in educational institutions in Toledo City District, Philippines. The findings highlight the need for collaboration and communication between school leaders, teachers, and the community to ensure the success of instructional leadership practices. These findings have implications for educational policy and practice emphasizing the importance of investing in and supporting instructional leadership development to improve school effectiveness
-) Study Qaralleh, 2021 The research sought to know the role of school leaders in promoting community () partnerships CP in government schools that provide public education in Al-Kharj Governorate in the (Kingdom of Saudi Arabia and to explore ways to develop this type of relationship. According to the descriptive approach, 5,320 male and female teachers of both genders were recruited as a population for the study. The results indicated a moderate role for school leaders in promoting cooperative production in these public schools in Al-Kharj Governorate in the Kingdom of Saudi Arabia. Overall, participants showed a moderate level of appreciation. In addition, leaders had visions to expand cleaner production by engaging the community in education and development processes. It was also recommended to increase standards Partnership by putting the community in the management of local public schools. The results indicate the need for school leaders to form committees by involving community members in order to enhance the educational process
-) Study Smith, et al., 2020 The study aimed to evaluate the effects of (FSP interventions on children's academic, social, and emotional competencies. Mixed-effects meta-regression analyzes were used to

evaluate whether the effects of FSP intervention components were moderated by children's grade or race/ethnicity, and a comprehensive literature review was conducted that included 77 studies. Robust variance estimation (RVE) was used, and the results revealed that FSP interventions significantly and positively affected children's academic achievement ($\delta = .25$), behaviors ($\delta = .30$), social-behavioral competence ($\delta = .32$), and mental health ($\delta = .32$). In addition, certain structural components (i.e., home engagement) and relational components (i.e., school-to-home communication, collaboration and two-way communication) contributed significantly to the effects of the FSP intervention. Results indicated that some components of the FSP intervention (i.e., two-way communication and behavioral support) were more effective for older students. No significant moderation effects of race/ethnicity were found, suggesting that components of the FSP intervention were effective across participants. Overall, the results provide further support for the use of financial service provider interventions to support youth outcomes. Future meta-analyses should include single case design studies and explore unique combinations of FSP intervention components. Study findings also show that family-school partnership (FSP) interventions capitalize on linkages between families and schools, where parents and teachers work jointly to promote child development. Through activities that connect both settings

Comment on research

The current research agrees in one of the variables presented with the aforementioned reference research as one of its variables, so it is similar to it in the subject matter, while all the variables in their entirety evaluating the approach to cooperation and partnership between schools and society in developing educational administration that were presented here were not observed in any of the research that was reviewed by teachers and principals, which indicates the originality of the topic at hand, and its application to which indicates the lack of Iraqi libraries for such a study, in schools in the Iraqi state

Applied study

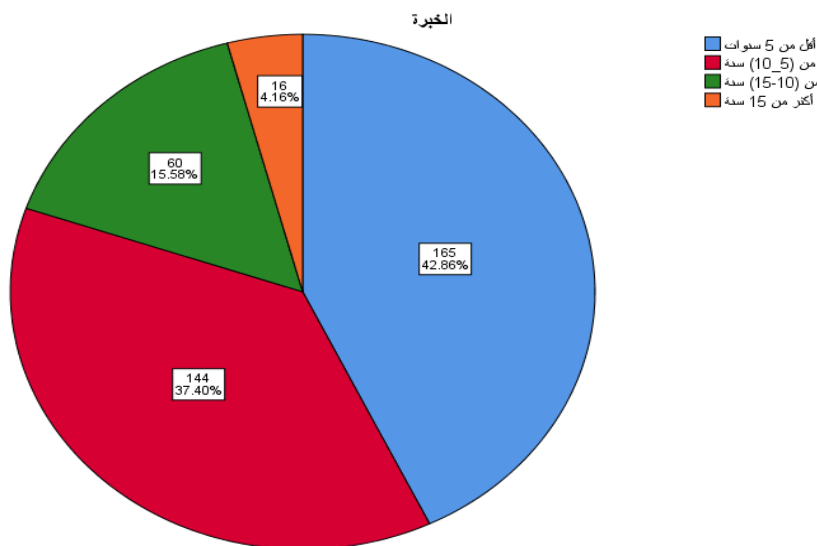
Personal data of the sample

Table (1) Sample experience

%	Repetition	Experience
42.9	165	Less than five years
37.4	144	From 5 to 10 years
15.6	60	From 10 to 15 years
4.2	16	More than fifteen years
%100	385	Total

Source: Spss 25 .

Figure (1) Sample experience



Source: Spss 25 .

Testing the reliability and validity of the scale

Table (2) Cronbach’s alpha coefficient values

Number of phrases	Stability coefficient	Interviewer
5	0.950	An approach to cooperation and partnership between schools and society
6	0.962	Development of educational administration
11	0.975	The questionnaire

:SourceSpss 25 .

that is, they are values that have statistical acceptance , (0.60) < The value that expresses stability for all axes .so the values are significant ,

:Construct validity

Table (3): Correlation coefficients

)sig (Pearson coefficient	Interviewer
0.00	0.972	An approach to cooperation and partnership between schools and society
0.00	0.981	Development of educational administration

,Through what we investigated, it became clear that the correlation coefficients have statistical significance .which indicates the validity of the questionnaire

: Internal consistency validity

Table (4) is the correlation coefficient of the paragraphs with the axes

Correlation coefficient		M
An approach to cooperation and partnership between schools and society		
0.968	.The school discusses with community members how to correct student behavior	1
0.942	.Local community members help solve student problems	2
0.798	.The school contributes to spreading awareness to the local community	3
0.941	.The school invites members of the local community to participate in activities	4
0.970	.The school invites parents to discuss their children's level	5
Development of educational administration		
0.870	.Educational plans are evaluated on an ongoing basis	1
0.875	The administration monitors the extent to which the objectives of the established educational plans are achieved	2
0.943	.The school's policy and future plans are discussed	3
0.922	.Attention is paid to developing appropriate regulations to organize educational work	4
0.951	.Management looks to measure performance and evaluate the positive and negative aspects	5
0.972	.The administration works to form quality committees within the school	6

:SourceSpss 25 program results .

It is clear that all the statements that were presented showed a moral connection with the axis to which it belongs, and therefore those axes possess a degree of honesty. For internal consistency, explain this as: All coefficients are significant with values > (0.60); From the above, the questionnaire is characterized by .honesty and internal consistency

:Descriptive statistics

:was used for evaluation, and the statistics were as follows

Dependent phrases for a questionnaire Table (5) statistics

sig	The error	deviation	Average	Paragraph	M
0.00	.05899	1.15752	4.0805	The school discusses with community members how to correct students' behavior	1
0.00	.05899	1.15752	4.0805	.Local community members help solve student problems	2
0.00	.05031	.98722	4.1325	The school contributes to spreading awareness to the local .community	3
0.00	.03544	.69542	3.7195	The school invites members of the local community to participate .in activities	4

0.00	.05358	1.05132	3.8597	The school invites parents to discuss their children's level	5
0.00	.04502	.88333	3.9403	Educational plans are evaluated on an ongoing basis	6
0.00	.05792	1.13647	3.7896	The administration monitors the extent to which the objectives of the established educational plans are achieved	7
0.00	.05382	1.05604	3.8675	The school's policy and future plans are discussed	8
0.00	.05020	.98499	4.1481	Attention is paid to developing appropriate regulations to organize educational work	9
0.00	.05914	1.16032	4.0883	Management looks to measure performance and evaluate the positive and negative aspects	10
0.00	.04585	.89968	3.4390	The administration works to form quality committees within the school	11

:SourceSpss 25 .

The average answers to the questionnaire items indicate a high and very high rating according to the five-point Likert scale

: Testing of research hypotheses

- An approach to cooperation and partnership between schools and society There is a moral effect in developing educational administration in Iraqi schools

Table (6): Pearson

Pearson	Selection	Modified patch	mistake
.906	.822	.821	.398

From the results ofSPSS outputs

- . The correlation value = 0.906, which indicates a very strong relationship
- Value for corrected determination = 0.821 f an The cooperation and partnership approach explains (. educational administration) in of the variance %82.1

Table (7): Moral

	squares Total	D f	Mean square	The amount of freedom	Moral
Regression	279.152	1	279.152	1763.235	.000
The rest	60.636	383	.158		
Total	339.788	384			

From the results ofSPSS outputs

- The value (Sig) is 0.00 of the cooperation and which means : There is a significant impact ,0.05> partnership approach between schools and society in developing educational administration in Iraqi . schools

Table (8): Proverbs and proverbs

	B	The error	The beta	t	Moral
Curriculum cooperation And partnership between Schools And society	.912	.022	.906	41.991	.000
(Constant)	.252	.089		2.844	.005

From the results ofSPSS outputs

: (8) From table

$$Y_x = 0.252 + 0.912 X$$

Wherey_x And , Developing educational administration x . the cooperation and partnership approach Hence, the approach to cooperation and partnership between schools and society will increase to a greater . B 0.912 degrees develop educational administration order to degree in

- There are no significant differences between the average answers of sample members about The the approach of cooperation and partnership between schools and society in developing impact of .according to the variable number of years of experience educational administration in Iraqi schools

: To test this hypothesis, the researcher relied on the test shown in the following table

ANOVA

	Sum of squares	D f	Mean square	Degree of freedom	Moral
Regression	39.758	3	13.253	17.885	.000
The rest	282.323	381	.741		
the total	322.081	384			

= 0.00 We conclude from itSig exist from which the null hypothesis is accepted , i.e. it does not ,0.05 > the approach Significant differences between the average answers of sample members about The impact of cooperation and partnership between schools and society in developing educational administration in Iraqi .according to the variable number of years of experience schools.

RESULTS

1. An approach to cooperation and partnership between schools and society in There is a moral effect . developing educational administration in Iraqi schools

The researcher found that the approach of cooperation and partnership between schools and society is considered essential in developing educational administration . Through this cooperation, the two sides are .able to exchange knowledge and experiences, and improve the level of education and upbringing in general This cooperation could include developing curricula, organizing external educational events, and providing . training courses for teachers and school administrators

2. There are no significant differences between the average answers of sample members about The impact the approach of cooperation and partnership between schools and society in developing educational of .according to the variable number of years of experience administration in Iraqi schools

The researcher did not notice any differences resulting from the sample's responses on the importance of the cooperation and partnership approach between schools and society , as there is no significant relationship to the variable years of experience in confirming this importance. Everyone emphasizes, based on their various experiences, that this cooperation helps build effective communication bridges between schools and the local community, which contributes to the exchange of experiences and knowledge and the development of .academic programs and educational activities in accordance with the needs of students and the community

RECOMMENDATIONS

- The researcher recommends paying attention to participatory aspects and cooperative activities between .various units in society
- Activating the role of the family is synonymous with the educational process as it is considered the first .building block in society
- .Developing curricula in accordance with community requirements
- Supporting and improving the performance of teachers and educational administration by relying on the . necessary training and support courses for them
- .Preparing and training teachers to deal with curricula according to community requirements
- the approach of cooperation and partnership in evaluating education and increasing its Relying on .quality and student success In the future

REFERENCES

1. Abu Jamal, Owaisat. (2024). Obstacles to the participatory relationship between kindergartens and the local community from the point of view of female directors. College of Arts Research Journal . 4(2). .Egypt
2. ,Stone, Afra diamond. (2010), Parental partnership in education and teaching between home and school research published in the Journal of Educational Development in the Sultanate of Oman, Volume 9, Issue Ninety-.Five

3. Davistani, Muhammad bin Kamil bin Muhammad. (2020), School educational leadership in light of the , concepts of comprehensive quality, International Journal of Educational and Psychological Sciences .Volume 42, Issue 60
4. Al-Rubaie, Nasser. (2023). An analytical study of the organizational guide for school partnership with the family and society and proposals for its development. Ibn Khaldun Journal of Studies and Research , 3(10).
5. Al-Rehaily, Samar Ahmed, and Al-Sisi, Areej Hamza. (2019), Mechanisms for activating community partnership between families ,The school in light of the vision of the Kingdom of Saudi Arabia (2030) .Journal of Psychological and Educational Sciences, Volume 5, Number 3
6. Sadiq, Shatha Abdullah Hassan. (2017), Analysis of the school administrative process in light of modern .educational administration theories, Educational Knowledge Journal, Issue Ten, Part Two
7. Talafha, Ibrahim Ali Ahmed. (2017), The role of school administration in activating the partnership between school and society from the point of view of teachers in Koura District schools, Scientific .Journal of the College of Education, Volume Thirty-Three, Issue Seven
8. Al-Otaibi, Fahd Musleh, Al-Tuwaijri, Anas Ibrahim Hamad. (2020), The role of school administration in enhancing School partnership with the family and community in light of the organizational guide for .partnership, International Specialized Educational Journal, Volume 23, Issue 9
9. Makhlof, Issa Ramadan Muhammad; Al-Shoufani, Hamid Al-Mabrouk Saleh. (2024). The degree to which the school administration uses methods of cooperation between the school and the local community from the point of view of teachers (an applied study on the basic education stage in the (municipality of Al-Abyar in Libya. Afaq Journal of Humanitarian and Applied Studies, (1), 17-41 .
10. Misbah Ali, Khairiya Al-Hadi. (2023), The role of educational leadership in developing the educational and pedagogical process in institutions Educational , Libyan Society for Educational Sciences, Al-.Qartas Magazine, Issue 22, Part Two
11. Kilag, OKT, Abendan, CFK, Uy, FT, Calledo, MFS, Diano Jr, FM, & Morales Jr, NM (2024). Assessing the impact of principal's instructional leadership, school level, and effectiveness in educational institutions. *Science and Education* , 4 (5), 902-917.
12. Qaralleh, T. J. (2021). The role of school leaders in promoting community partnership. *Asian Journal of University Education (AJUE)* , 17 (1), 124-133.
13. Smith, T. E., Sheridan, S. M., Kim, E. M., Park, S., & Beretvas, S. N. (2020). The effects of family-school partnership interventions on academic and social-emotional functioning: A meta-analysis exploring what works for whom. *Educational Psychology Review* , 32 , 511-544.